

TRACKING DIGITAL LEARNING

05/03/2021

Tracking from start of lockdown 2

Tracking of engagement with digital learning.

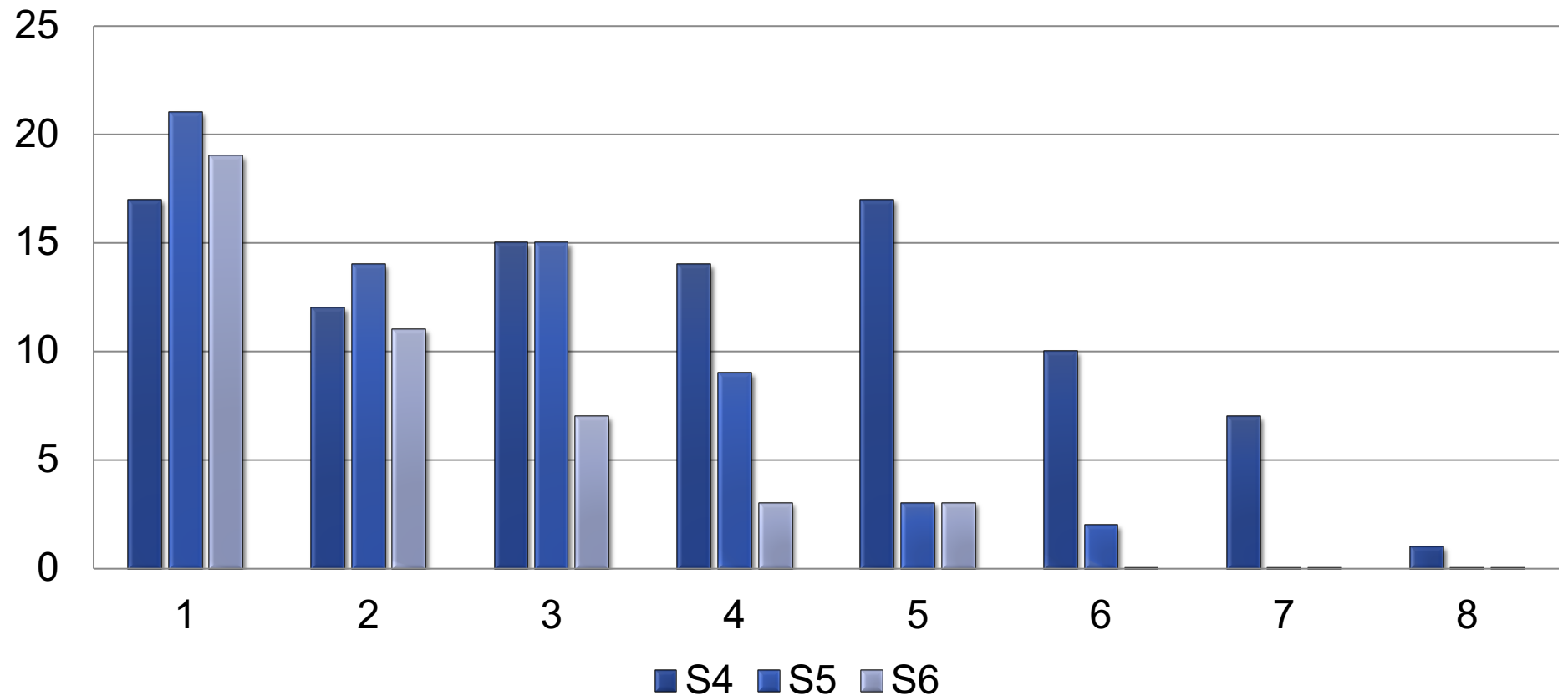
- Staff were asked to highlight names of pupils who had not engaged at all in online learning.
- Although this does not tell us what level of engagement we are getting from our pupils it does show that they are able to access the work and have made some effort to engage.
- SLT have reviewed the data and set out actions for each pupil.

Agreed actions

- Number of subjects not engaging in:
 1. CL will contact home via text.
 2. All pupils will get a text message sent by SLT and SLT will contact S5/6 pupils
 3. All pupils will get a text message sent by SLT and SLT will contact S5/6 pupils
 4. All pupils will get a text message sent by SLT and SLT will contact S5/6 pupils
 5. and above STL will call home

Data analysis

Digital non-engagement in subjects



Data – Key Messages.

- (The information below takes into account the school leavers)
- **Total Non-engagement**
- **S4 – 15%**
 - This also means that 85% of our S4 pupils have engaged in some way.
- **S5 – 7%**
 - Almost all of our S5 pupils have engaged in some way.
- **S6 – 7%**
 - Almost all of our S6 pupils have engaged in some way.

Data – Key Messages.

- (The information below takes into account the school leavers)
- **Engagement with less than half of subjects**
- **S4 – 44%**
 - This also means that 66% of our S4 pupils have engaged in more than half of their subjects.
- **S5 – 30%**
 - 70% engaging in more than half of their subjects.
- **S6 – 18%**
 - 82% engaging in more than half of their subjects.

Data – Key Messages.

- (The information below takes into account the school leavers)
- **Pupils engaging in almost all subjects (non-engagement in 2 subjects for S4 or 1 Subject for S5/6)**
- **S4 – 43%**
- **S5 – 50%**
- **S6 – 63%**

Data – Key Messages.

- Our numbers for total non-engagement are fairly low. This is a positive as we know that the vast majority of seniors can access the work.
- **We have a an issue in the pupils who are accessing less than half of their subjects, especially in S4.**
- **Although we have a good number of pupils engaging in the majority of their subjects, there is still room for improvement here.**

BGE engagement data

- Pupils who have not engaged at all.
- S1 8%
- S2 34%
- S3 13%

BGE engagement data

- Pupils with around half engagement
- S1 40%
- S2 52%
- S3 40%

BGE engagement data

- Pupils with positive engagement – only 1 or 2 subjects not engaging.
- S1 39%
- S2 38%
- S3 44%

Actions

- All pupils with low engagement have been text by the school.
- Senior Phone Calls have been made.
- Staff being allocated BGE learners to call.
- Support in breaking down the barriers to digital learning.
- Devices have been given out.
- Potential of a daily text for pupils not registered?

Questions?

New BGE Hub

- Staff have all started and the Hub space has been set up.
- Support has started for 6 key pupils and this will be expanded.
- Feedback from staff and pupils has been very positive.
- The base will be a key support for our S1 Strategy going forward this session.

Questions?